

In an ever-changing and dynamic market, staying connected within your organization is more important than ever before.

Migrating your existing networks and paving your way to a digital transformation by building, managing and operating your next-generation security connectivity services comes with challenges related to multi domain technical integrations, different user interface, commercial, licensing and cost-management bottlenecks.

.connect

The ngena .connect offers you a single pane of glass for quoting, building, deploying and operating your next-generation secure connectivity services on a global scale.



The .connect platform provides a consistent workflow across integrated technologies with flexible, intuitive and consistent user-centric design, minimizing the need to deal with different interfaces and tools by using a best-of-breed technology mix within a single cloud-based platform.

Through the ngena .connect platform you can initiate and manage all your services starting from quoting and ordering down to design, fulfillment planning and tracking, operations and real-time monitoring, change management, advanced analytics and reporting.

And our global network of SASE (SD-WAN + Security) POPs, conveniently co-located with major public cloud providers and public cloud security service providers and interconnected with high-speed proprietary links, guarantees global connectivity and automated orchestration execution.

Select

With ngena's own market-disruptive QuickSizer now integrated in the .connect platform, you are able to quote and order your entire secure connectivity service within a one simple and user-friendly interface.

Get a quote in a matter of minutes, on a global scale instead of a complex, lengthy process that takes weeks or even months.

Enhance

Configuring your secure connectivity services has never been easier. The Network Designer tool empowers you to configure your services by introducing simplicity and consistency and eliminates the need of having deep knowledge in multiple domains (networking, on prem security, cloud security, etc).

But if you prefer to engineer your solution down to the most nitty-gritty details you can take advantage of our Network Designer "expert mode" and unleash your inner geek.

Deploy

Once you have configured your secure connectivity services, ngena will take care of the fulfillment and deployment process and logistics, giving you full visibility into every phase.

Using the built-in zero touch deployment engine, your CPEs get automatically configured as soon as they are turned on and in a matter of minutes become part of your SD-WAN network. At that point your site is open for business.

Operate

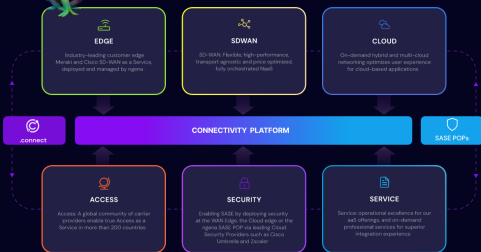
ngena's operations teams leverage the advanced .connect proactive monitoring system and ensure that your secure connectivity services are always up and running.

Reporting of issues such as network degradations in a timely manner guarantee that the global SLAs requirements are always met and enable you to stay ahead of potential network outages.



Secure Connectivity Platform

Intuitively Select, Enhance, Deploy & Operate



about ngena

ngena is a global company that connects teams and unites the workforce worldwide through a centralized secure connectivity network experience. ngena simplifies and strengthens global connectivity, network security, cloud computing, business networking, data analytics and data security at workplaces anywhere they are, at office, at home or on the road.

Built on Cisco technology, ngena uses state-of-the-art cloud and virtualization SASE technologies. ngena is the first company to offer pre-built configuration for fast and secure deployment using its Secure Connectivity Platform as-a-Service.

ngena is headquartered in Frankfurt, Germany with business operations in the United States, South America, Europe and Asia.

Employees: 300+ | Partners: 50+ | SASE POPs: 19 | Backbone Miles: 100,000+

We are here to answer your questions about our solutions and how to partner with ngena. connect@ngena.net | www.ngena.net

